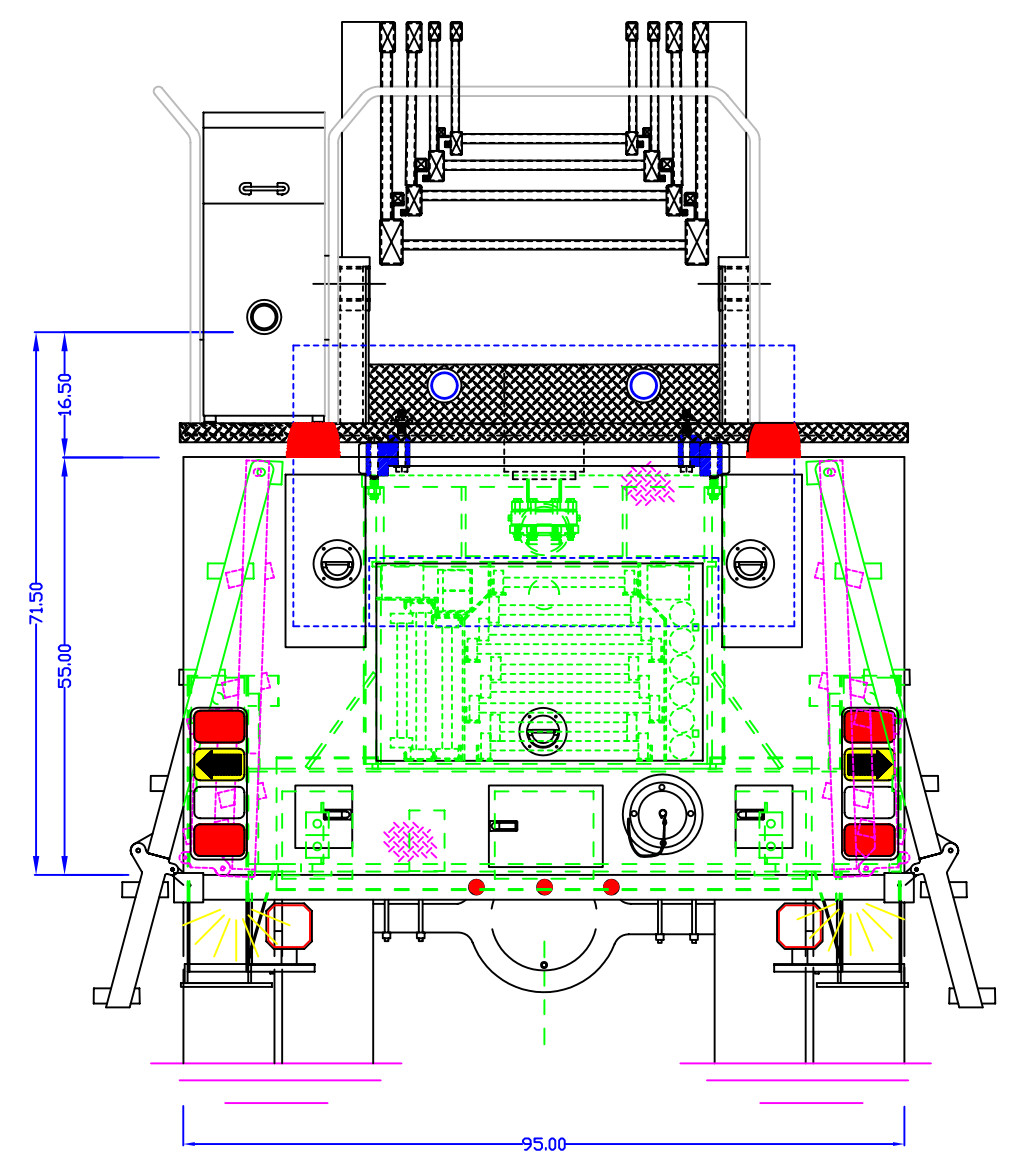
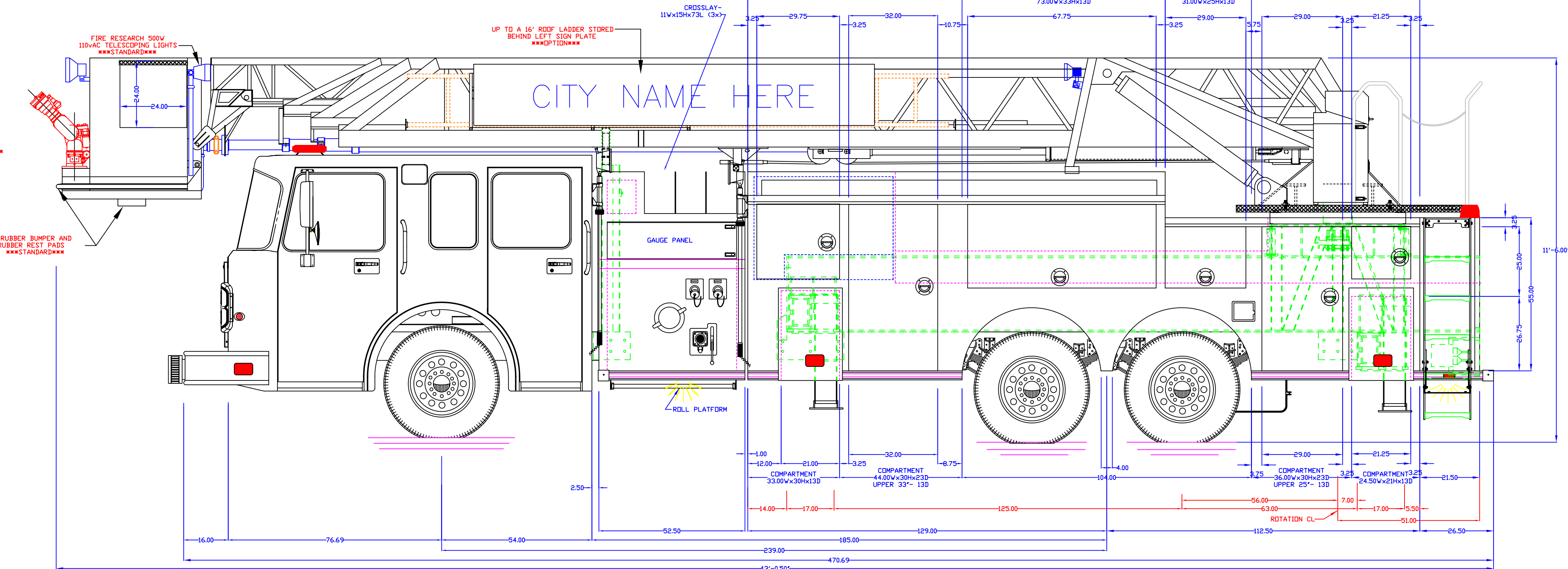
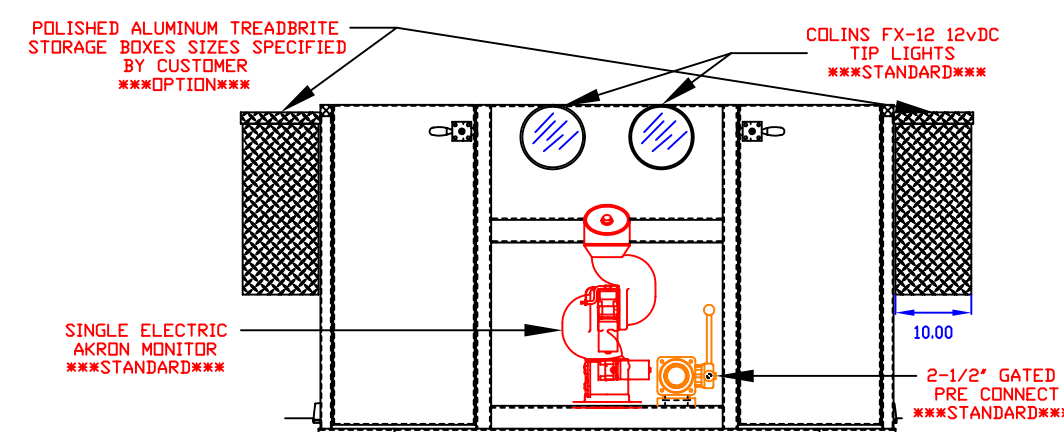
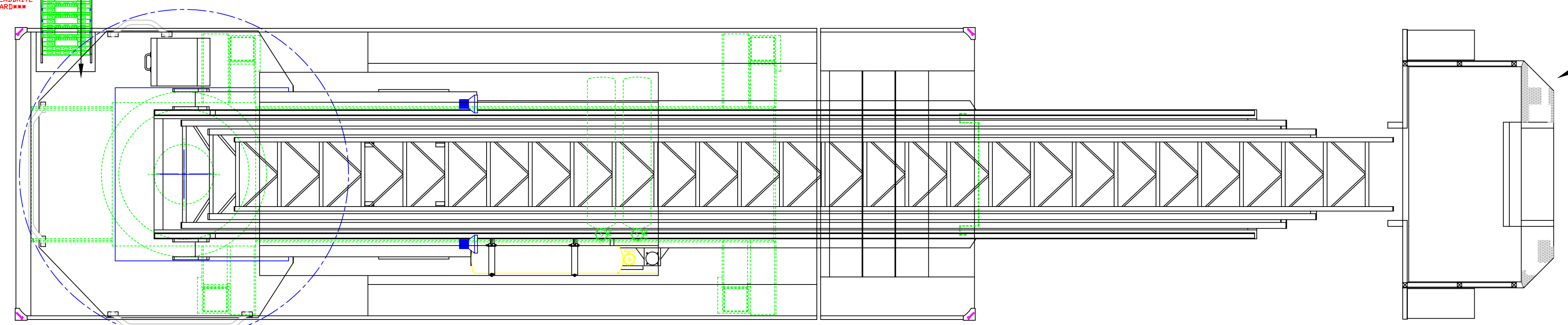


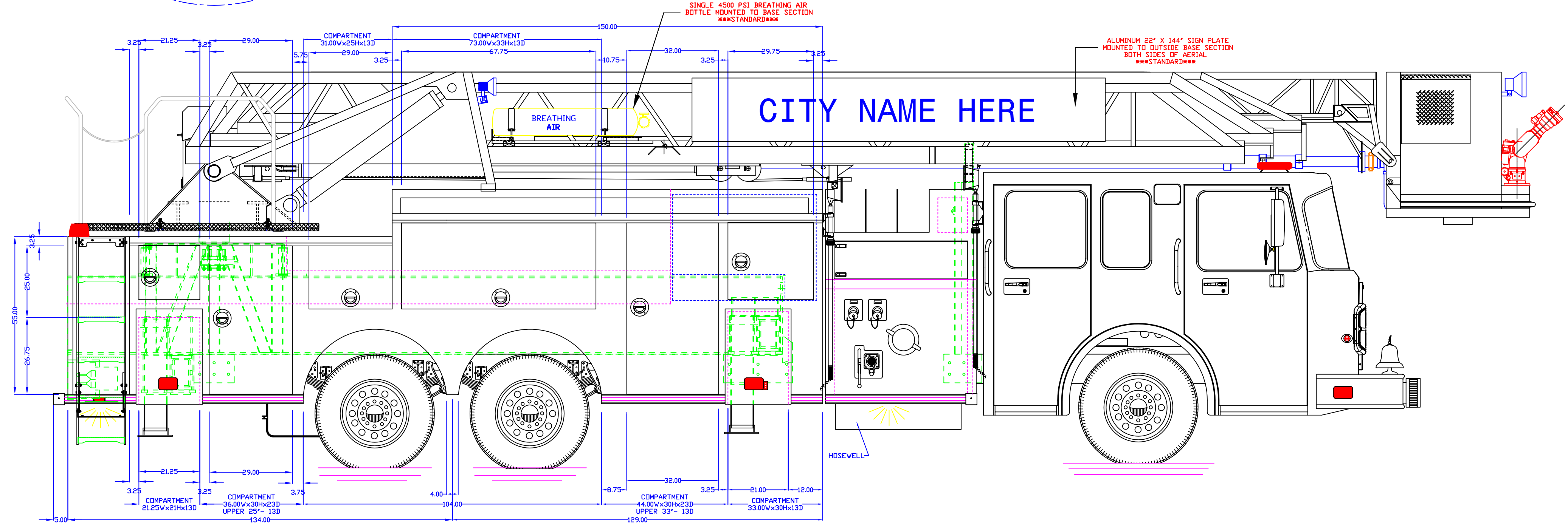
APPROVED BY:



WALK SURFACE OF TURNABLE REAR HALF PERFORATED ALUMINUM FRONT PORTION POLISHED ALUMINUM TREADBRITE  
\*\*\*STANDARD\*\*\*



NOTE: LADDER- 104' RK MFG PLATFORM  
TANK CAP- 300 GAL POLYPROPYLENE  
PUMP CAP- 1750 GPM  
DIMENSIONS SHOWN ARE APPROXIMATE AND ARE SUBJECT TO MINOR DEVIATIONS DURING CONSTRUCTION  
NOT ALL ITEMS IN SPECS ARE SHOWN ON THIS PRINT  
COMPARTMENT INTERIORS SPATTER PAINT  
SIDE PUMP PANELS THERMOPLASTIC  
DNAN 10KW GENERATOR INSTALLED  
NFPA UPPER LIGHT PACKAGE- WHELEN  
NFPA LOWER LIGHT PACKAGE- WHELEN



12' 0"	MAXIMUM HEIGHT	DATE: 9-7-07	REVISED
45' 11"	MAXIMUM LENGTH		
95"	BODY WIDTH		



THIBODAUX, LA